



The Steering Experts



‘Highest quality steering systems and components  
for the most challenging applications’





## EXPERIENCE THE PRECISION OF MAXTEK MARINE HYDRAULIC STEERING

Boats fitted with high-horsepower engines require steering systems with enough muscle to provide finger tip control at the helm. maXtek Marine steering systems are the perfect match for boats used for both pleasure and commercial applications.

maXtek Marine hydraulic steering only use the highest quality components from helm pumps and cylinders to hoses and couplings. Simply put, lower maintenance, longer working life and trust, in choosing the ultimate choice for your vessel.



The Steering Experts

# MAXTEK MARINE OUTBOARD SYSTEM

Part: ST150H-18



- For engines 150hp and under
- Standard wheel turns: 5.6 lock to lock
- Double sheathed flexible nylon hose

ST150H-18	Components	Description
Kit includes	STNSH018	Front mount helm pump 18cc
	ST3016-1	Front mount XP outboard cylinder
	STNH04-SS-14	Hydraulic hose 1/4", 1 x 15 metre
	SFOIL	Hydraulic oil 1 litre x 2 bottles, ISO VG 15
	ST-OAK	Oil bleeding kit
	STCOU1/4	2 x Reusable couplings to fit 1/4" hose

Application Guide	System Model	Applicable Outboard Motors
	ST150H-18	Yamaha 4 stroke: From 75hp to 150hp Yamaha 2 stroke: 50hp, 60hp and from 100hp to 150hp Suzuki 4 stroke: From 70hp to 150hp Honda 4 stroke: From BF 50 to BF 150 except old BF 115A / old BF 130A Mercury: From 50hp to 150hp except old 4 stroke (1732cc) from 75hp and 115hp Tohatsu 4 stroke: From BFT70 to BFT150 except old BFT115A / old BFT130A Tohatsu 2 stroke: Up to 140hp Evinrude: From 65hp to 150hp
	STC3520815 Adapter Plate	Yamaha 4 stroke: From 30hp to 70hp / Yamaha 2 stroke: From 50hp to 95hp



**XP SERIES CYL**



# MAXTEK MARINE OUTBOARD SYSTEM

Part: ST350H-25



- For engines under 350hp
- Standard wheel turns: 5.3 lock to lock
- Double sheathed flexible nylon hose

ST350H-25	Components	Description
Kit includes	STNSH025	Front mount helm pump 25cc
	ST3520H-R1	Front mount XP outboard cylinder
	STNSH06-15	Hydraulic hose 3/8", 1 x 15 metre
	SFOIL	Hydraulic oil 1 litre x 2 bottles, ISO VG 15
	ST-OAK	Oil bleeding kit
	STCOU3/8	2 x Reusable couplings to fit 3/8" hose

Application Guide	System Model	Applicable Outboard Motors
	ST350H-25	Yamaha 4 stroke: From 75hp to 350hp Yamaha 2 stroke: 50hp, 60hp and from 100hp to 250hp Suzuki 4 stroke: From 70hp to 300hp Honda 4 stroke: From BF 50 to BF 250 except old BF 115A / old BF 130A Mercury: From 50hp to 250hp except old 4 stroke (1732cc) from 75hp and 115hp Tohatsu 4 stroke: From BFT70 to BFT250 except old BFT115A / old BFT130A Tohatsu 2 stroke: Up to 140hp Evinrude: From 65hp to 300hp
	STC3520815 Adapter Plate	Yamaha 4 stroke: From 30hp to 70hp / Yamaha 2 stroke: From 50hp to 95hp

**CYLINDERS**

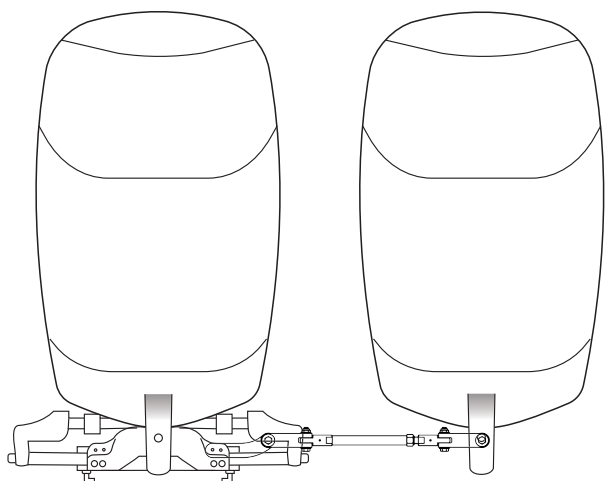


# MAXTEK MARINE TWIN OUTBOARD WITH MECHANICAL TIE BAR PACKAGE

Part: ST350HT1-22

Twin Engine, Single Cylinder

Application	Wheel turn	Components	Qty	Model
Up to 600HP (counter rotating engine)	5.3	Cylinder - XP	1	ST3520H-R1
Up to 450HP (non-counter rotating engine)		Helm pump	1	STNSH025
		Hydraulic hose	1	STNSH06-15
		Hydraulic oil	2	SFOIL
		Accessories kit	1	ST-OAK
		Tie bar	1	STTBK800S
		Reusable coupling to fit 3/8" hose	2	STCOU3/8



Part: ST700HT1-25

Twin Engine, Single Cylinder

Application	Wheel turn	Components	Qty	Model
Up to 700HP (counter rotating engine)	6.5	Cylinder - XP	1	ST3822W
Up to 520HP (non-counter rotating engine)		Helm pump	1	STNSH025
		Hydraulic hose	1	STNSH06-15
		Hydraulic oil	2	SFOIL
		Accessories kit	1	ST-OAK
		Tie bar	1	STTBK800S
		Reusable coupling to fit 3/8" hose	2	STCOU3/8



# MAXTEK MARINE OUTBOARD SYSTEM

Part: ST700H-25



- Hydraulic Steering for high horsepower
- Standard wheel turns: 6.5 lock to lock
- Double sheathed flexible nylon hose
- Any engine above 200HP up to 400HP

ST700H-25

Kit includes

Components	Description
STNSH025	Front mount helm pump 25cc
ST3822W	Front mount XP outboard cylinder
STNSH06-15	Hydraulic hose 3/8", 1 x 15 metre
SFOIL	Hydraulic oil 1 litre x 2 bottles, ISO VG 15
ST-OAK	Oil bleeding kit
STCOU3/8	2 x Reusable couplings to fit 3/8" hose

Application  
Guide

System Model	Applicable Outboard Motors	Cylinder Model
ST700H-25	Any above 200hp of all brands	ST3822W

**XP SERIES CYLINDERS**







“

We have been installing the maXtek marine hydraulic steering on our wide range of RIB's and trailer boats since 2016. We have used the maXtek hydraulic steering on private use boats as well as on commercial vessels. We have had only positive comments.

David Pringle - Smuggler Boats

”



# MAXTEK MARINE FOR NON-POWER ASSIST STERN DRIVE VESSELS

Part: ST250S



- Standard wheel turns: 4.4 lock to lock
- Balanced Cylinder
- Suitable for Non-Power Assist Sterndrive

ST250S

Kit includes

Components	Description
STNSH030	Front mount helm pump 30cc
ST3214B	Cylinder XP for sterndrive - balanced
STNSH06-15	Hydraulic hose 3/8", 1 x 15 metre
SFOIL	Hydraulic oil 1 litre x 2 bottles, ISO VG 15
ST-OAK	Oil bleeding kit
STCOU3/8	2 x Reusable couplings to fit 3/8" hose



# MAXTEK MARINE HEAVY DUTY HELM PUMPS

1. Three ball bearings supporting the rotor, which makes the helm pump suitable for heavy duty use
2. Three shaft seals
3. Vented oil plug has the function of releasing pressure generated from inside the pump

Model	Description	Displacement		Shaft	Key	Lock Valve	Port Size
		cc / rev	cu.in / rev				
STNSH018	Helm Pump	18	1.09	Tapered	3/16" Square	Built in	PF1/4
STNSH025		25	1.52				
STNSH030		30	1.83				
STNSH037		37	2.25				
STNSH044		44	2.68				

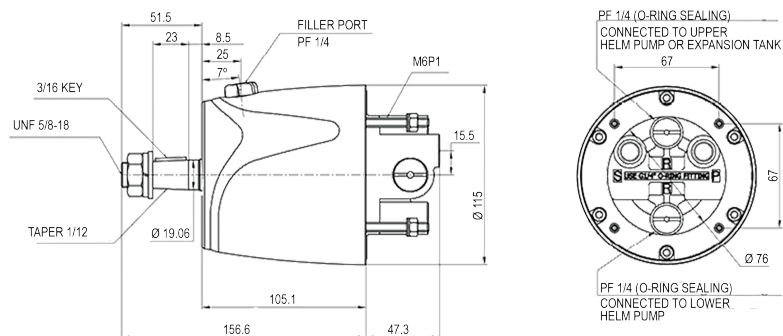
- Only use maXtek hydraulic oil for the best performance
- 18cc helm pump includes PF1/4 x PF1/4 elbow fitting as standard
- Other helm pumps include PF1/4 x PF3/8 elbow fitting as standard
- Helm pump always comes with a vented plug
- Non-vented plug (STCAP), optionally available, has to be used on an additional helm pump which is installed in an upper station

## Related parts for Helm Pump

Model	Description
STSH200	20 Degree Wedge
STCAP-1	Vented Cap
STCAP	Non- Vented Cap
STC1800804	Helm Pump Seal Kit



## Dimensions





# MAXTEK MARINE HYDRAULIC STEERING CYLINDERS

## MAXTEK MARINE HYDRAULIC STEERING CYLINDER 150HP

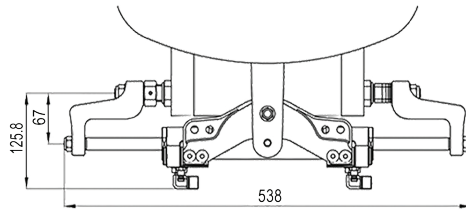
Part: ST3016-1

Volume	101cc
Stroke	200mm
Shaft Diameter	16mm
Bore diameter	30mm
Output force	354kgs

- Hard anodized, high tensile mounting plate
- Stainless steel shaft with hard chrome plate
- Aluminium anodized tube
- Aluminium anodized arms
- Stainless steel lock nuts
- Balanced cylinder



### Dimensions



### Related parts for ST3016-1 Cylinder

Model	Description
STC3520815	Conversion Kit R4 (Yamaha)
STC3520806	Space Ring Kit
STC3016805	Seal Kit (Pair)



## MAXTEK MARINE HYDRAULIC STEERING CYLINDER 350HP

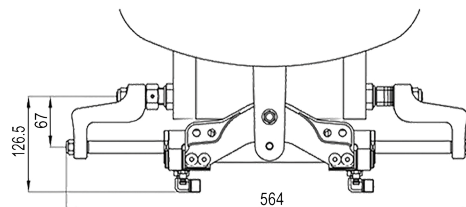
Part: ST3520H-R1

Volume	132cc
Stroke	203mm
Shaft Diameter	20mm
Bore diameter	35mm
Output force	354kgs

- Hard anodized, high tensile mounting plate
- Stainless steel shaft with hard chrome plate
- Aluminium anodized tube
- Aluminium anodized arms
- Stainless steel lock nuts
- Balanced cylinder



### Dimensions



### Related parts for ST3520H-R1 Cylinder

Model	Description
STC3520815	Conversion Kit R4 (Yamaha)
STC3520808	Space Ring Kit
STC3520802	Seal Kit (Pair)

# MAXTEK MARINE HYDRAULIC STEERING CYLINDER 700HP

Part: ST3822W

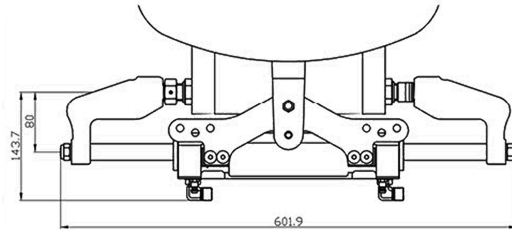


Volume	162cc
Stroke	215mm
Shaft Diameter	22mm
Bore diameter	38mm
Output force	528kgs

- Stainless steel mounting bracket
- Stainless steel shaft with hard chrome plate
- Aluminium anodized tube
- Aluminium anodized arms
- Stainless steel lock nuts
- Balanced cylinder



## Dimensions



# STERN DRIVE CYLINDER

Part: ST3214B

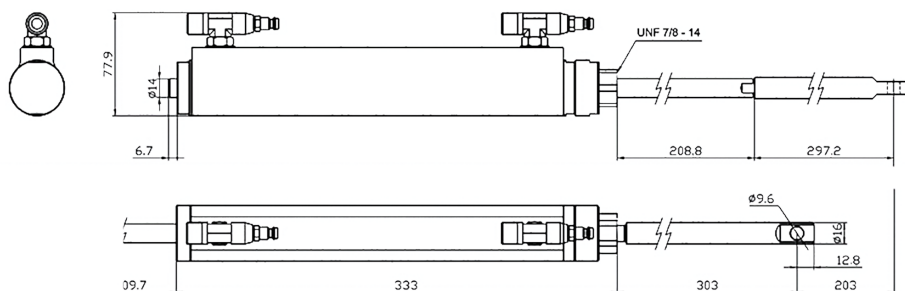
Volume	132cc
Stroke	203mm
Shaft Diameter	14mm
Bore diameter	32mm
Output force	455kgs

Suitable for:

- Hydraulic Steering System for Non-Power Assist



## Dimensions



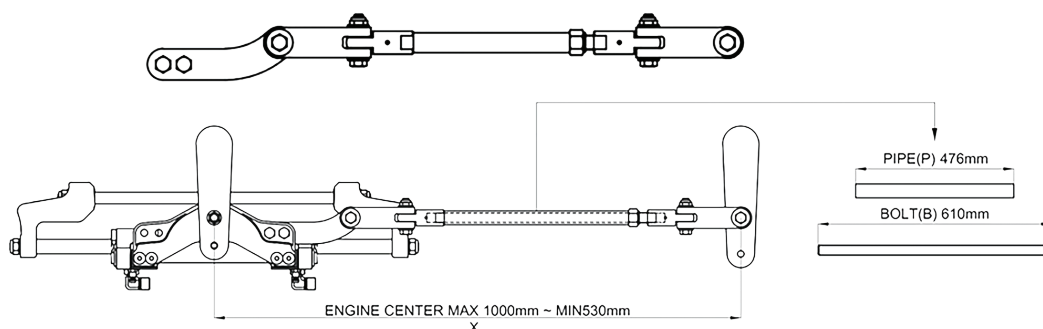


# MAXTEK MARINE MECHANICAL TIE BAR SYSTEM TO SUIT ST350 AND ST700

Part: STTBK800S



Tie Bar Length Adjustment	Cutting type
Applicable Cylinder	ST3520H-R1
Number of Engines	2
Number of Cylinder	1
Mounting	Cylinder to Engine
Minimum Distance of "X"	530mm
Maximum Distance of "X"	1000mm



“

At Huntsman Boats we made the change to maXtek hydraulic steering in 2017 and to date we have had only positive feedback from our dealers and customers New Zealand wide. We have installed on all our boats since that time and the maXtek system has proven to be 100% reliable.

”

Mike Bamber -Huntsman Boats









# MAXTEK MARINE ACCESSORIES

## HOSE

Part Number	Description	Hose Coupling	Hose Size	Recommend
STNH04-SS-14	Flexible 15 metre double sheathed nylon hose	(PF)1/4	1/4"	ST150H-18

Part Number	Description	Hose Coupling	Hose Size	Recommend
STNSH06-15	Flexible 15 metre double sheathed nylon hose	(PF)3/8	3/8"	ST350H-25
				ST700H-25

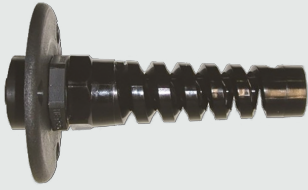


## REUSABLE HOSE COUPLINGS FOR HELM CONNECTION

Part Number	Spec	Material	Suitable Hose	Remark
STCOU1/4	(PF) 1/4	Zinc Plated Steel	STNH04-SS-14	Push in Type
STCOU3/8	(PF) 3/8	Brass	STNSH06-15	Reusable (Screw in) Type



## BULKHEAD STRAIN RELIEF HOSE KIT



Part Number	Description	Suitable Hose
STBULK	Bulkhead Thru-Hull Kit STRAIN RELIEF	STNH04-SS-14
		STNSH06-15

## BULKHEAD THRU-HULL HOSE FITTING

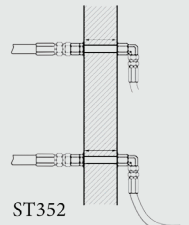


Part Number	Description	Suitable Hose
STB200	Twin Bulkhead Thru-Hull Kit	3/8" / 1/4"

## STAINLESS STEEL BULKHEAD KIT



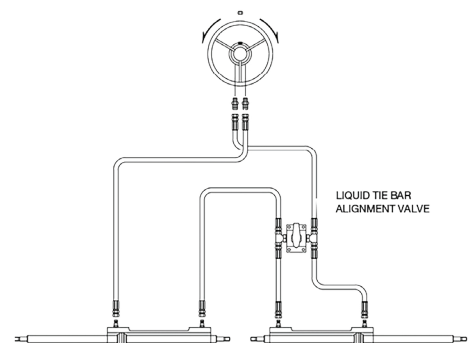
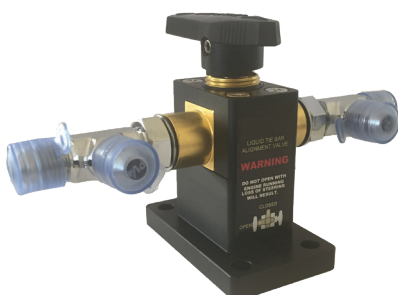
Part Number	Description	Suitable Hose
ST352	Bulkhead Fitting (Elbow fitting)	3/8"



## MAXTEK MARINE LIQUID TIE BAR ALIGNMENT VALVE

Used for twin engine systems where a mechanical tiebar cannot be used.  
3/8" fittings to suit the ST350 cylinder and 1/4" fittings to suit the ST150 cylinder. The maXtek Marine liquid tiebar is used to align engines on opposite sides of the craft, such as a catamaran.

Part Number	Description	Application
STLTB-38	3/8	3/8" hose ST350 & ST700 systems
STLTB-14	1/4	1/4" hose ST150



## OIL



- Premium quality oil - engineered for maximum performance and durability of your hydraulic steering system
- Suitable for all maXtek marine systems
- ISO 15
- Anti-wear, anti rust oil

Part Number	Description
SFOIL	1 litre bottle

## OIL BLEEDING KIT



Part Number	Description	Material
ST-OAK	Oil Fill & Puring Kit	Hydraulic Steering Kit

## OIL PLUG ON HELM PUMP



Part Number	Description	Application
STCAP-1	Oil Plug, vented	Suitable for Single station
STCAP	Oil Plug, non-vented	Suitable for Dual station

## MAXTEK HYDRAULIC STEERING SEAL KIT

- Cylinder seal kits supplied as a pair

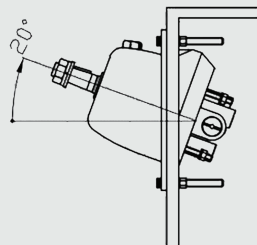


Part Number	Description	Application	Remark
STC3016802	Tube Seal Kit	ST150 System	Supplied as a pair
STC3520802	Tube Seal Kit	ST350 System	Supplied as a pair

## WEDGE KIT

- Solid machined aluminium, 20 degree recessed wedge
- Commonly used on centre consoles

Note: Helm not included for illustration purposes only.

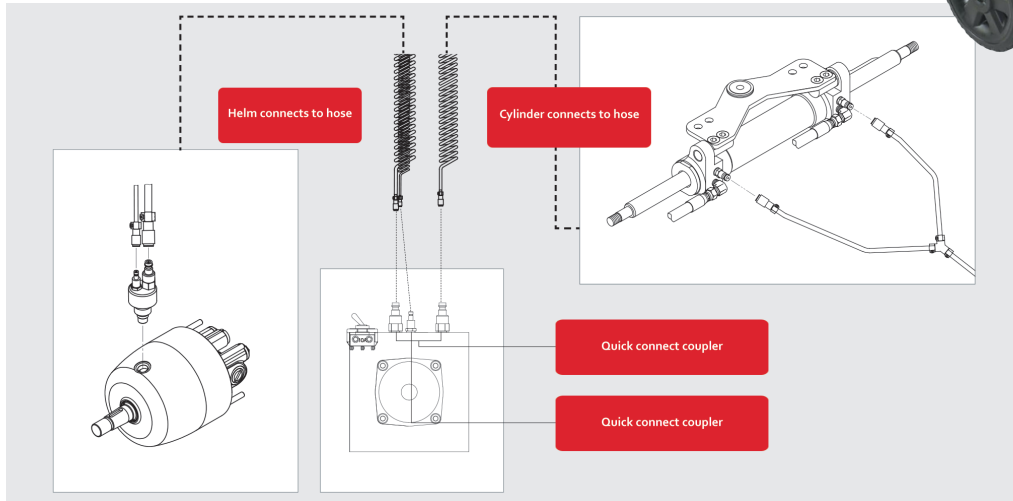


Part Number	Description
STSH200	Wedge Kit



# AIR PURGE PRO

- Reduce time and effort when installing
- Improve performance of steering system
- Simple setup and portable carrier
- Quick connect coupler for all fittings
- Complete fill & purge in 10 min. or less
- Easy to drain used contaminated oil



# PACKAGING





The Steering Experts

